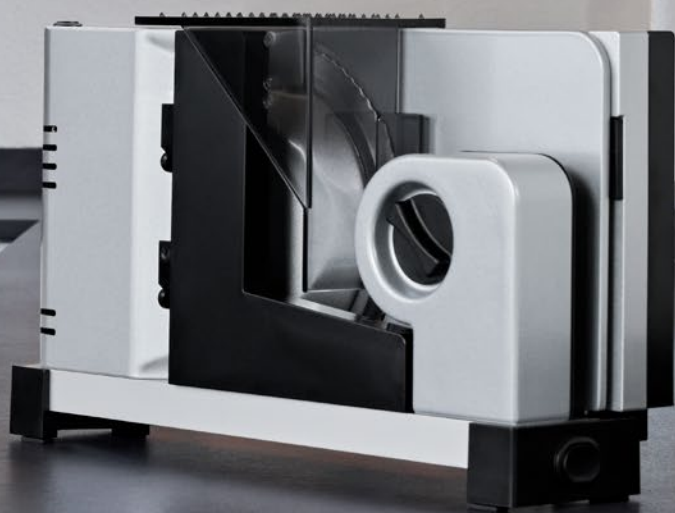


ritter
QUALITY SINCE 1905



**Household
Appliances**



**MADE IN
GERMANY**

Household Appliances & food slicer

selected design



Hand blender **vertico⁷**
Page 4/5



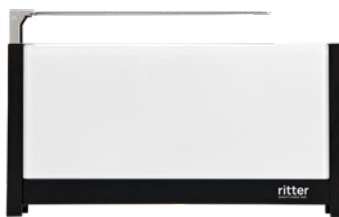
Hand blender **vertico⁷ Plus**
Page 6/7



Coffee machine **cafena⁵**
Page 8/9



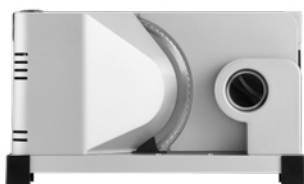
Kettle **cavita⁵**
Page 10/11



Toaster **merido⁵**
Page 12/13



Toaster **merido³**
Page 14/15



Electrical food slicer
elexa⁷
Page 16/17



Electrical food slicer
amido³
Page 18/19



Hand-operated
food slicer **piatto⁵**
Page 20/21



Cordless hand blender vertico⁷

- cordless, battery-operated hand blender
- full metal construction
- LED battery level indicator
- three speed settings
- two-finger switch-on safety system
- automatic safety shut-off in case of overloading or overheating
- universal cutter made of stainless steel: used to blend most foods
- blending cup made of plastic

– further colours: black, red, gold, light gold, light brown, dark brown



plug-in power supply unit for charging station: input voltage 100 – 240 V, lithium-ion-battery: 7.2 V, 2.1 Ah, TÜV-Rheinland/GS, CE

GTIN-Code	item no.	PU / pcs. per pallet	colour	Hand blender incl. charging station:	
				<u>(WxHxD) in cm</u>	<u>Weight</u>
40 04822 62811 0	628.011	2 / 56	silver	15.0 x 44.0 x 15.5	1.7 kg
40 04822 62862 2	628.062	2 / 56	black		
40 04822 62867 7	628.067	2 / 56	red		
40 04822 62872 1	628.072	2 / 56	gold		
40 04822 62877 6	628.077	2 / 56	light gold		
40 04822 62882 0	628.082	2 / 56	light brown		
40 04822 62887 5	628.087	2 / 56	dark brown		
				Hand blender:	
				<u>(WxHxD) in cm</u>	<u>Weight</u>
				6.0 x 42.0 x 7.0	1.0 kg
Subject to change without notice.					



Cordless hand blender vertico⁷ Plus

- cordless, battery-operated hand blender
- full metal construction
- LED battery level indicator
- three speed settings
- two-finger switch-on safety system
- automatic safety shut-off in case of overloading or overheating
- four attachments made of stainless steel:
 - universal cutter: used to blend most foods
 - cutting knife: suited for the cutting of meat and fibrous fruits and vegetables
 - whipping disk: used to whip creamy or fluffy foods
 - stirring disk: suited to stir foods with a thick, creamy consistency
- blending cup made of stainless steel, blending cup made of plastic
- further colours: black, red, gold, light gold, light brown, dark brown



plug-in power supply unit for charging station: input voltage 100 – 240 V, lithium-ion-battery: 7.2 V, 2.1 Ah, TÜV-Rheinland/GS, CE

GTIN-Code	item no.	PU / pcs. per pallet	colour	Hand blender incl. charging station:	
40 04822 62810 3	628.010	2 / 56	silver	<u>(WxHxD) in cm</u>	<u>Weight</u>
40 04822 62863 9	628.063	2 / 56	black	15.0 x 44.0 x 15.5	1.7 kg
40 04822 62868 4	628.068	2 / 56	red	Hand blender:	
40 04822 62873 8	628.073	2 / 56	gold		
40 04822 62878 3	628.078	2 / 56	light gold	<u>(WxHxD) in cm</u>	<u>Weight</u>
40 04822 62883 7	628.083	2 / 56	light brown	6.0 x 42.0 x 7.0	1.0 kg
40 04822 62888 2	628.088	2 / 56	dark brown	Subject to change without notice.	



Coffee machine cafena⁵

- coffee machine for 8 cups à 125 ml
- filter size 4
- housing made of high-quality plastic
- thermal jug with shatter-proof stainless steel vacuum cylinder
- thermal jug with an extended heat-keeping function can also be used as a serving jug
- rotatable and removable filter holder with drip stop and overflow protection
- energy-saving eco brewing process: boiler is located right underneath the water tank, which leads to reduced temperature losses
- automatic switch-off after the brewing process
- 0-watt standby mode
- automatic calcification stop function: device switches off automatically in the event of calcification
- illuminated eco switch
- five rubber feet to prevent slipping



220 – 240 V, 650 – 800 W, VDE/GS, safety category 1, CE

GTIN-Code	item no.	PU / pcs. per pallet	colour	(WxHxD) in cm	Weight
40 04822 64000 6	640.000	2 / 36	black	17.5 x 43.5 x 22.0	3.0 kg
40 04822 64001 3	640.001	2 / 36	white		
40 04822 64002 0	640.002	2 / 36	red		

Subject to change without notice.



Kettle cavita⁵

- cordless kettle with 360° rotating base
- heat-resistant acrylic housing
- double-sided water level indicator
- safety lid with lock mechanism
- removable lime-scale filter
- covered heating element with stainless steel protector plate
- cord storage in the base with two cord exits
- four rubber feet to prevent slipping
- 70°, 80°, 95° and 100°C temperature settings with LED indicator
- overheating protection with automatic switch-off when the set temperature is reached
- boil-dry protection with automatic switch-off when kettle is empty
- automatic switch-off when kettle is removed from base
- 1.1 l capacity



reddot design award
winner 2013



220 – 240 V, 2.400 – 2.800 W, VDE/GS, safety category 1, CE

GTIN-Code	item no.	PU / pcs. per pallet	colour	(WxHxD) in cm	Weight
40 04822 63515 6	635.015	2 / 64	black	22.0 x 24.5 x 15.0	1.3 kg
40 04822 63516 3	635.016	2 / 64	white		
40 04822 63517 0	635.017	2 / 64	red		

Subject to change without notice.



ritter
QUALITY SINCE 1905

Toaster merido⁵

- elongated slot toaster for 2 slices of toast
- thermal insulated housing with glass panels
- integrated bread and roll rack
- memory function of the toasting degree
- toasting degree with LED indication
- automatic toast food centering
- defrosting function
- reheating function
- automatic switch-off function when toast is jammed
- separate stop button to interrupt toasting
- crumb tray



220 – 240 V, 850 – 1.000 W, TÜV-Rheinland/GS, safety category 1, CE

GTIN-Code	item no.	PU / pcs. per pallet	colour	(WxHxD) in cm	Weight
40 04822 63044 1	630.044	2 / 72	black	38.5 x 20.0 x 9.0	3.0 kg
40 04822 63045 8	630.045	2 / 72	white		
40 04822 63046 5	630.046	2 / 72	red		

Subject to change without notice.



ritter
QUALITY SINCE 1905

Toaster merido³

- elongated slot toaster for 2 slices of toast
- thermal insulated housing with aluminum panels
- integrated bread and roll rack
- memory function of the toasting degree
- toasting degree with LED indication
- automatic toast food centering
- defrosting function
- reheating function
- automatic switch-off function when toast is jammed
- separate stop button to interrupt toasting
- crumb tray



220 – 240 V, 850 – 1.000 W, TÜV-Rheinland/GS, safety category 1, CE

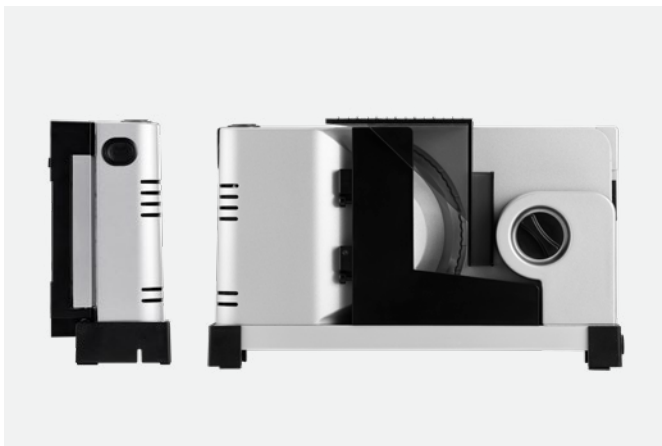
GTIN-Code	item no.	PU / pcs. per pallet	(WxHxD) in cm	Weight
40 04822 63073 1	630.073	2 / 72	38.5 x 20.0 x 9.0	2.7 kg

Subject to change without notice.



Electrical food slicer elexa⁷

- full metal construction
- silver metallic
- foldable supply table
- serrated circular blade, 17 cm Ø
- slice thickness adjustable up to approx. 14 mm
- two-finger switch-on safety system
- switch for intermittent and continuous operation
- divisible carriage for space-saving storage, even when slicer is folded
- carriage way approx. 20 cm
- food tray
- cable compartment



230 V, 65 W, duty cycle 5 min, VDE/GS, safety category 2, CE

GTIN-Code	item no.	PU / pcs. per pallet
40 04822 52114 5	521.014	2 / 72

(WxHxD) in cm	Weight
24.0 (folded 10.0) x 20.0 x 34.0	3.6 kg

Subject to change without notice.



Electrical food slicer amido³

- full metal construction, inclined
- silver metallic
- serrated circular blade, 17 cm ø
- circular blade cover
- slice thickness adjustable up to approx. 23 mm
- safety switch for intermittent and continuous operation
- easy-going metal carriage – broad-surfaced and detachable
- carriage way approx. 24 cm
- food tray
- cable compartment



reddot design award
winner 2008



230 V, 65 W, duty cycle 5 min, VDE/GS, safety category 2, CE

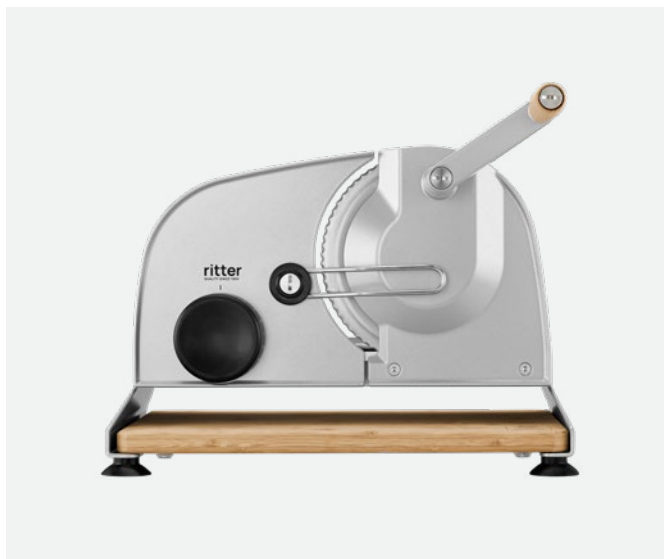
GTIN-Code	item no.	PU / pcs. per pallet	(WxHxD) in cm	Weight
40 04822 55821 9	558.021	1 / 36	30.0 x 24.5 x 39.0	4.4 kg

Subject to change without notice.



Hand-operated food slicer piatto⁵

- manually operated
- food sliced from left to right
- full metal construction
- silver metallic
- serrated circular blade, 17 cm ø
- slice thickness adjustable up to approx. 20 mm
- detachable carriage made of stainless steel
- carriage way approx. 20 cm
- smooth crank made from metal with a beech wood handle
- stainless steel guide bracket for the food to be sliced
- FSC certified bamboo board collects the sliced food and, at the same time, serves as a cutting board
- four high-quality suction feet for a non-slip and solid footing



TÜV-Rheinland/GS

GTIN-Code	item no.	PU / pcs. per pallet	(WxHxD) in cm	Weight
40 04822 10722 6	107.022	2 / 32	34.5 x 25.5 x 37.0	4.3 kg incl. bamboo board

Subject to change without notice.

Electrical **food slicers**

premium

comfort

economy

Hand-operated **appliances**



secura⁹
Page 24/25



sinus⁵
Page 26/27



inteso⁴
Page 28/29



sinus²
Page 30/31



arcus³
Page 32/33



sinus¹
Page 34/35



fino¹
Page 36/37



sigma¹
Page 38/39



orbis^{5/1}
Page 40/43



podio³
Page 44/45

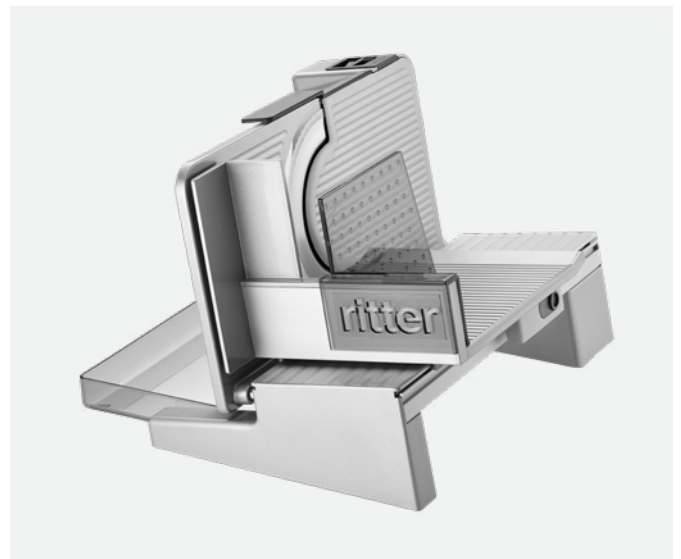


peeler
Page 46/47



Electrical food slicer secura⁹

- full metal construction, inclined
- silver metallic
- serrated circular blade, 17 cm ø
- circular blade cover
- slice thickness adjustable up to approx. 23 mm
- safety switch for intermittent and continuous operation
- vario electronic rpm adjustment
- easy-going metal carriage – broad-surfaced and detachable
- carriage way approx. 24 cm
- food tray
- cable compartment



DC motor, 230 V, 130 W, duty cycle 10 min, VDE/GS, safety category 1, CE

GTIN-Code	item no.	PU / pcs. per pallet	(WxHxD) in cm	Weight
40 04822 55375 7	553.075	2 / 36	30.0 x 24.5 x 37.0	5.3 kg

Subject to change without notice.

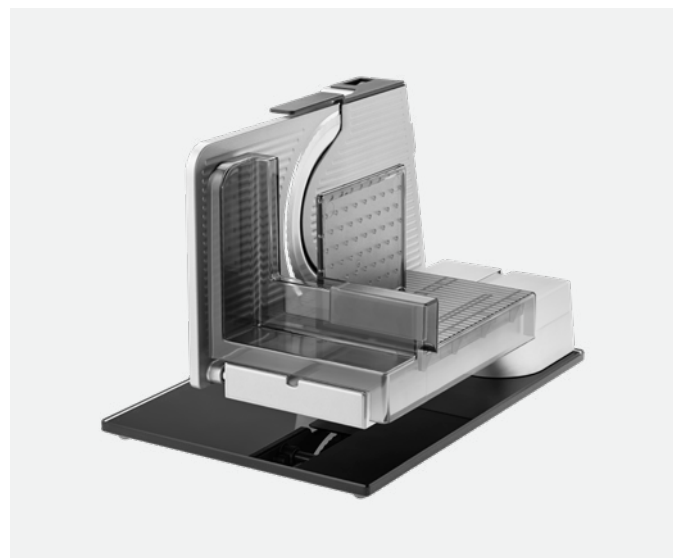


Electrical food slicer sinus⁵

- full metal construction, suspended
- silver metallic
- bottom panel made of shatterproof glass
- serrated circular blade, 17 cm Ø
- circular blade cover
- slice thickness adjustable up to approx. 23 mm
- safety switch for intermittent and continuous operation
- broad-surfaced, detachable carriage
- carriage way approx. 24 cm
- cable compartment



reddot award 2015
winner



230 V, 65 W, duty cycle 5 min, VDE/GS, safety category 2, CE

GTIN-Code	item no.	PU / pcs. per pallet
40 04822 55720 5	557.020	1 / 30

(WxHxD) in cm
27.0 x 26.0 x 38.0

Weight
5.9 kg

Subject to change without notice.



Electrical food slicer inteso⁴

- full metal construction, inclined
- silver metallic
- serrated circular blade, 17 cm ø
- circular blade cover
- slice thickness adjustable up to approx. 23 mm
- safety switch for intermittent and continuous operation
- easy-going carriage made of stainless steel – broad-surfaced and detachable
- carriage way approx. 24 cm
- food tray
- cable compartment



230 V, 65 W, duty cycle 5 min, VDE/GS, safety category 2, CE

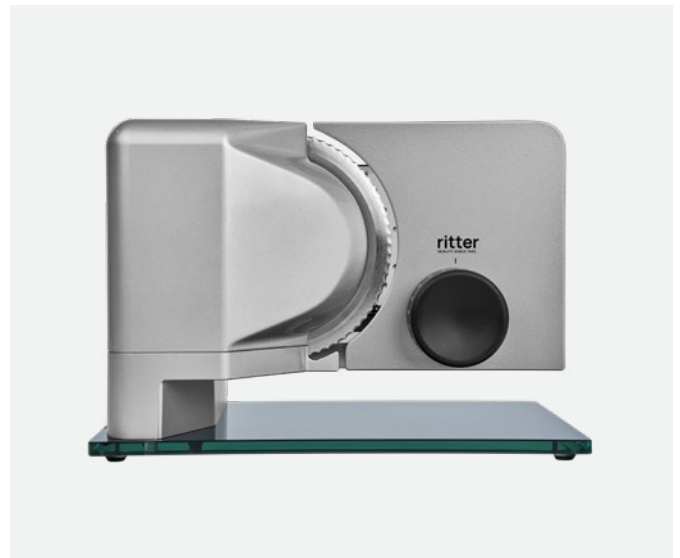
GTIN-Code	item no.	PU / pcs. per pallet	(WxHxD) in cm	Weight
40 04822 55476 1	554.076	2 / 48	25.5 x 25.0 x 37.5	3.7 kg

Subject to change without notice.



Electrical food slicer sinus²

- metal construction, suspended
- silver metallic
- bottom panel made of shatterproof glass
- serrated circular blade, 17 cm ø
- slice thickness adjustable up to approx. 20 mm
- safety switch for intermittent and continuous operation
- detachable carriage
- carriage way approx. 18 cm
- cable compartment



230 V, 65 W, duty cycle 5 min, VDE/GS, safety category 2, CE

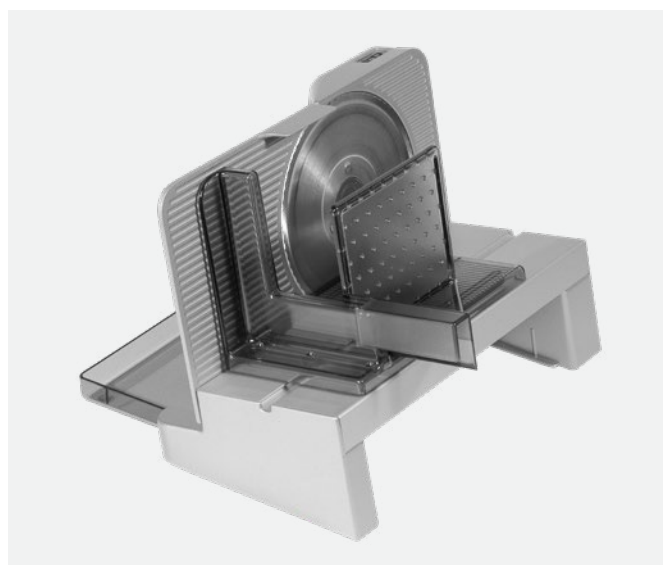
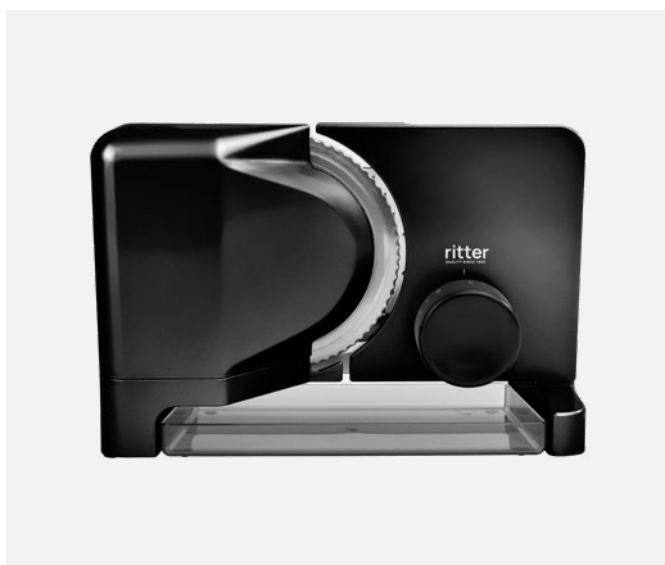
GTIN-Code	item no.	PU / pcs. per pallet	colour	(WxHxD) in cm	Weight
40 04822 52850 2	528.050	2 / 20	silver metallic	20.5 x 24.0 x 34.5	4.5 kg
40 04822 52851 9	528.051	2 / 20	black		

Subject to change without notice.



Electrical food slicer arcus³

- metal construction, inclined
- silver metallic
- serrated circular blade, 17 cm ø
- slice thickness adjustable up to approx. 20 mm
- safety switch for intermittent and continuous operation
- detachable carriage
- carriage way approx. 18 cm
- food tray
- cable compartment



230 V, 65 W, duty cycle 5 min, VDE/GS, safety category 2, CE

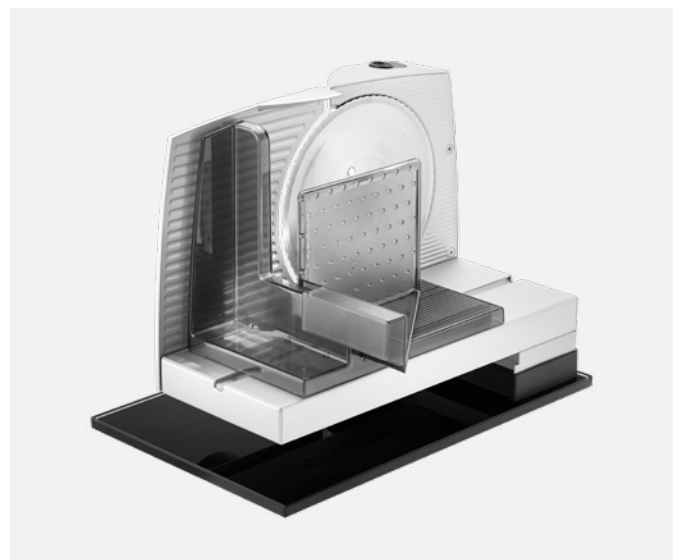
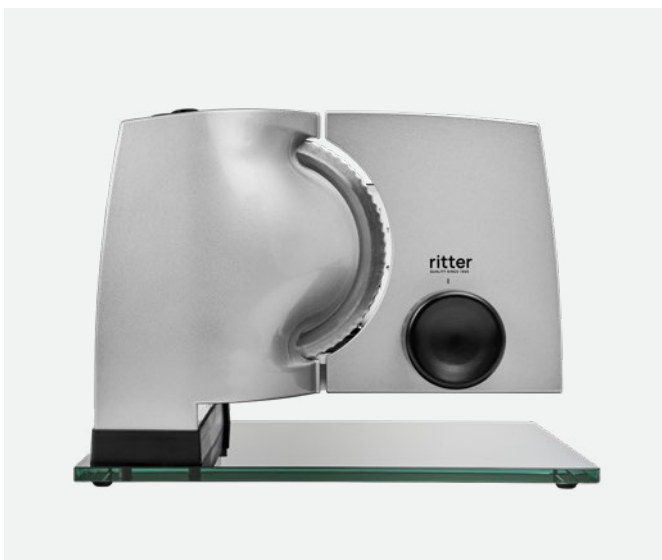
GTIN-Code	item no.	PU / pcs. per pallet	colour	(WxHxD) in cm	Weight
40 04822 51523 6	515.023	4 / 48	silver metallic	22.5 x 23.0 x 33.5	3.0 kg
40 04822 51546 5	515.046	4 / 48	black		

Subject to change without notice.



Electrical food slicer sinus¹

- metal construction, suspended
- silver metallic
- bottom panel made of shatterproof glass
- serrated circular blade, 17cm ø
- slice thickness adjustable up to approx. 20 mm
- safety switch for intermittent and continuous operation
- detachable carriage
- carriage way approx. 18 cm



230 V, 65 W, duty cycle 5 min, VDE/GS, safety category 2, CE

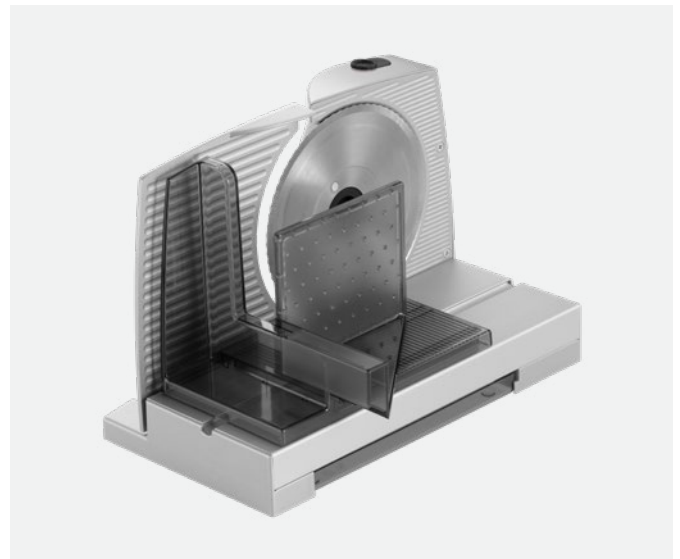
GTIN-Code	item no.	PU / pcs. per pallet	(WxHxD) in cm	Weight
40 04822 52320 0	523.020	2 / 40	22.0 x 26.5 x 34.5	4.3 kg

Subject to change without notice.



Electrical food slicer fino¹

- metal construction
- silver metallic
- serrated circular blade, 17 cm ø
- slice thickness adjustable up to approx. 20 mm
- safety switch for intermittent and continuous operation
- detachable carriage
- carriage way approx. 18 cm
- food tray
- cable compartment



230 V, 65 W, duty cycle 5 min, VDE/GS, safety category 2, CE

GTIN-Code	item no.	PU / pcs. per pallet
40 04822 51833 6	518.033	4 / 48

(WxHxD) in cm

20.5 x 23.0 x 33.0

Weight

2.6 kg

Subject to change without notice.



Electrical food slicer sigma¹

- metal construction
- grey
- serrated circular blade, 17 cm ø
- slice thickness adjustable up to approx. 20 mm
- safety switch for intermittent and continuous operation
- detachable carriage
- carriage way approx. 18 cm
- cable compartment



230 V, 65 W, duty cycle 5 min, VDE/GS, safety category 2, CE

GTIN-Code	item no.	PU / pcs. per pallet	(WxHxD) in cm	Weight
40 04822 51850 3	518.050	4 / 48	20.5 x 23.0 x 33.0	2.5 kg

Subject to change without notice.



Electrical food slicer orbis⁵

- high-quality plastic
- white
- foldable supply table
- serrated circular blade, 17 cm Ø
- slice thickness adjustable up to approx. 14 mm
- safety switch for intermittent and continuous operation
- vario electronic rpm adjustment
- detachable and divisible carriage for space-saving storage, even when slicer is folded
- carriage way approx. 18 cm
- cable compartment



230 V, 65 W, duty cycle 5 min, VDE/GS, safety category 2, CE

GTIN-Code	item no.	PU / pcs. per pallet
40 04822 50125 3	501.025	8 / 120

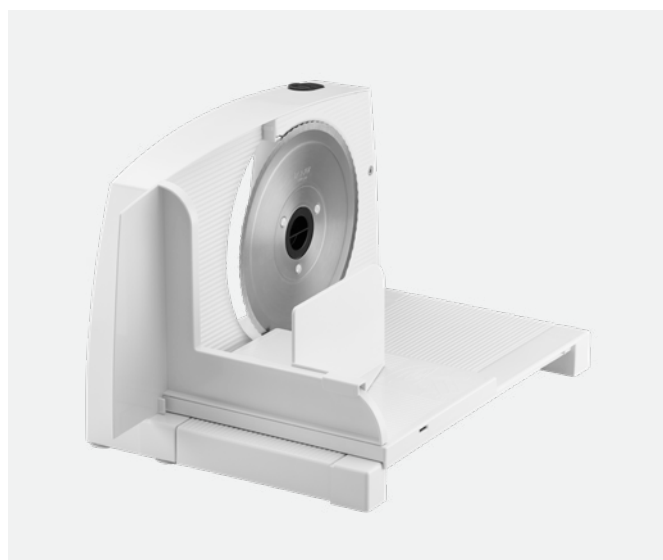
(WxHxD) in cm	Weight
26.0 (folded 10.5) x 21.0 x 34.0	1.7 kg

Subject to change without notice.



Electrical food slicer orbis¹

- high-quality plastic
- white
- foldable supply table
- serrated circular blade, 17 cm Ø
- slice thickness adjustable up to approx. 14 mm
- safety switch for intermittent and continuous operation
- detachable and divisible carriage for space-saving storage, even when slicer is folded
- carriage way approx. 18 cm
- cable compartment



230 V, 65 W, duty cycle 5 min, VDE/GS, safety category 2, CE

GTIN-Code	item no.	PU / pcs. per pallet
40 04822 50109 3	501.009	8 / 120

(WxHxD) in cm	Weight
26.0 (folded 10.5) x 21.0 x 34.0	1.7 kg

Subject to change without notice.



Hand-operated food slicer podio³

- manually operated
- food sliced from left to right
- full metal construction
- silver metallic
- serrated circular blade, 17 cm ø
- slice thickness adjustable up to approx. 20 mm
- detachable carriage made of stainless steel
- carriage way approx. 20 cm
- smooth crank made from metal with a plastic handle
- stainless steel guide bracket for the food to be sliced
- feet made of steel
- four high-quality suction feet for a non-slip and solid footing



reddot winner 2021



TÜV-Rheinland/GS

GTIN-Code	item no.	PU / pcs. per pallet	(WxHxD) in cm	Weight
40 04822 10720 2	107.020	2 / 32	36.5 x 25.0 x 33.5	3.3 kg

Subject to change without notice.



ritter peeler

- for right- and left-hand operation
- special mobile blade made of stainless steel
- handle made of plastic with eye remover (for finish cleaning of potatoes)
- colour: white



GTIN-Code	item no.	PU / pcs. per pallet
40 04822 20325 6	203.025	40

(WxH) in cm	Weight
6.5 x 11.0	11 g

Subject to change without notice.



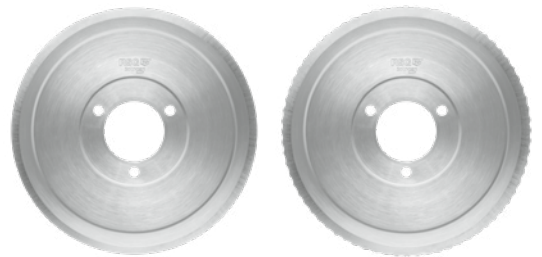
Accessories food slicer

Circular blades for the food slicers

The slicing result highly depends on the polish, the shaping and the quality of the circular blade. Therefore, ritter does offer a variety of circular blades with different slicing features for perfect slicing. The serrated circular blade is well suited for all kinds of slicing. The smooth ham- and sausage circular blade does evenly cut off thin slices from soft food in particular.

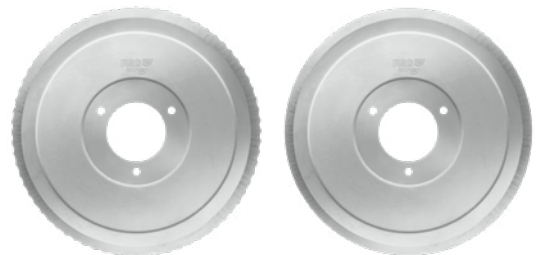
Circular blade made of stainless steel

The regular standard circular blade is suited for every-day use. The circular blade made of stainless steel is available as serrated circular blade and as smooth ham- and sausage circular blade.



Circular blade made of stainless steel with electropolished surface

The circular blade made of stainless steel has been polished electrolytically by a special procedure, resulting in an extremely smooth surface and even slicing edge. Thus, the slicing results get even more precise and the circular blade may be cleaned more easily. And in addition, the circular blade gains an elegant look of high polish. The electropolished circular blade is available as serrated circular blade and smooth ham- and sausage circular blade.



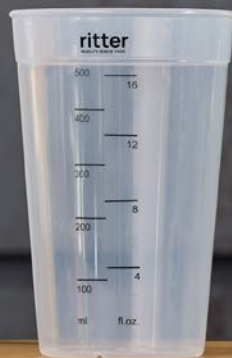
Original ritter maintenance grease

The original ritter maintenance grease is suitable for all ritter food slicers. We recommend to occasionally regrease the gear wheels on the circular blade and the guiding of the slicing carriage.



Subject to change without notice.

For accessories and spare parts please see: www.ritterwerk.com



Accessories hand blender

Hand blender attachments

The hand blender allows chopping, blending, whipping and mixing of many different food items. Depending on the desired result and consistency of the food items, ritter offers different attachments.

Universal cutter

This multi-purpose knife is suitable to chop and blend most food items.



Cutting knife

The cutting knife is especially suited for the cutting of meat and fibrous fruits and vegetables such as asparagus, spinach or pineapple.



Whipping disk

The whipping disk is used to whip creamy or fluffy food items such as cream or egg whites.



Stirring disk

The stirring disk is suited to stir food items with a thick, creamy consistency such as mayonnaise, sauces or mashes.



Blending cup made of plastic

Thanks to its tall, narrow shape, the blending cup is perfect for food processing with the cordless hand blenders by ritter. The filling capacity is 500 ml.



Blending cup made of stainless steel

The stainless steel blending cup is also well-shaped and therefore optimally suited for use with a ritter hand blender. Thanks to the stamped scale, you have a perfect view of when the maximum fill level of 500 ml has been reached.



Subject to change without notice.

For accessories and spare parts please see: www.ritterwerk.com



1905



1932



1968



2008

The history

ritterwerk was founded in 1905 by Franz Ritter and is a traditional Bavarian company based in Gröbenzell near Munich. As a German manufacturer of kitchen appliances, we have devoted ourselves to the principles and teachings of the Bauhaus of the 1920s. Therefore, we manufacture products whose forms always follow their functions.

The corner stone of today's success story was laid by means of knife cleaning machines, which at times, when stainless steel still needed to be invented, were quite popular. With this appliance, one was able to free knives and other cutlery that were not yet stainless quite easily of rust, with just a simple crank motion. Until the introduction of stainless steel, the knife-cleaning machine was sold more than 1.000.000 times; but also the other kitchen appliances by ritter that were created in years to follow enjoyed great popularity and some still do so today.

The first bread slicer by ritter was developed almost 30 years after the knife-cleaning machine was first introduced to the market. As with the knife-cleaning machine, the hand crank was also used here – with great success. In 1968, the first electric food slicer followed which, true to the Bauhaus principles of the 1920s, was also designed for the kitchen drawer.

The tradition of food slicing with ritter products ranges from the bread slicing machine with the long-serving hand crank and the electric drive to the suspended, inclined food slicer and the one that is integrated into the kitchen drawer. The product range has been continuously expanded over the years; now we offer toasters, coffee machines, kettles, hand blenders and a wide range of builtin systems. The technical refinements as well as the ingenuity regarding the design have been developed and adapted to today's expertise. Our roots and our endeavour to produce sustainable and durable kitchen appliances that are "made in Germany" and facilitate everyday life are still an important part of our corporate culture. Our selected design is a special range of small kitchen utensils that are outstandingly designed – and reflect our vision perfectly.

An important step was taken at the end of 2020 when the Schüller family took over ritterwerk by way of a management buyout following the departure of Werner Braun – thus, the company remains in private hands, the succession has been arranged and the course for a successful future has been set as well. Michael Schüller, who has been Managing Director since 2005, commented on the change with optimism: „We hope that the new ownership structure will enable us to further consolidate ritterwerk's position as an expert in small kitchen appliances. In doing so, we are relying on our entire workforce and are pleased that they support our takeover 100 %." The two sons, Moritz Sebastian and Leonard Lorin Schüller, are both working on site.



2010



2012



2015



2019



2020